

CHINA. C.M.

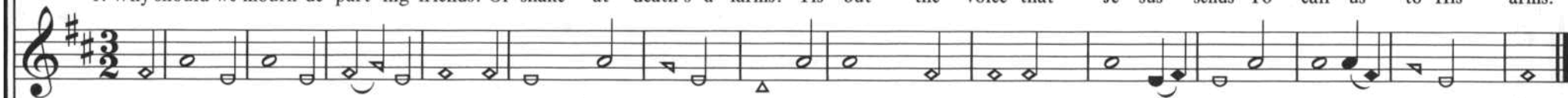
393

Issac Watts

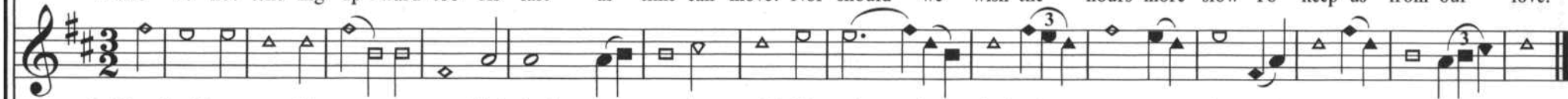
Swan



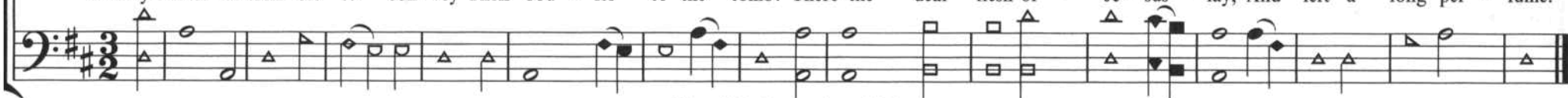
1. Why should we mourn de-part-ing friends? Or shake at death's a-larms? 'Tis but the voice that Je-sus sends To call us to His arms.



2. Are we not tend-ing up-ward too As fast as time can move? Nor should we wish the hours more slow To keep us from our love.



3. Why should we trem-ble to con-vey Their bod-ies to the tomb? There the dear flesh of Je-sus lay, And left a long per-fume.



The original parts about 1700.